



Brocade Fabric Manager is a powerful management platform for configuring and administering multiple Brocade Storage Area Network (SAN) fabrics.

FABRIC MANAGER

Highlights

- Efficiently provision, monitor, and administer large numbers of switches and multiple Brocade SAN fabrics
- Perform management tasks across multiple devices and fabrics in a single operation
- Track performance for utilization or for hot spots in the fabric, using simplified analysis to support trending and capacity planning
- Visualize and track changes to SAN configuration and state information through multiple views at multiple levels of detail
- Launch Fabric Manager from other enterprise management applications or launch other applications from Fabric Manager
- Track SAN assets by using detailed table views that can be exported to a spreadsheet
- Discover details about fabric devices, including Host Bus Adapter (HBA) asset information
- View the SAN layout through a topology map that specifies ISL, switch, and device details
- Identify, isolate, and manage SAN events across large numbers of switches and fabrics

A Complete SAN Management Tool for Brocade-Based SANs

Brocade® Fabric Manager is a powerful application that manages multiple Brocade SilkWorm® switches and fabrics in real time. In particular, Fabric Manager provides the essential functions for efficiently configuring, monitoring, dynamically provisioning, and managing Brocade SAN fabrics on a daily basis.

Through its single-point SAN management platform, Fabric Manager facilitates the global integration and execution of management tasks across multiple fabrics—thereby lowering the overall cost of SAN ownership. As a result, it is a flexible and powerful tool that provides rapid access to critical SAN information.

Fabric Manager is tightly integrated with other Brocade SAN management products, such as Web Tools and Fabric Watch, and it enables third-party product integration through built-in menu functions and the Brocade SMI Agent. Organizations can use Fabric Manager in conjunction with other leading SAN and storage resource management applications as the drill-down

element manager for a single or multiple Brocade fabrics, or use Fabric Manager as the primary SAN management interface.

BASIC FEATURES FOR HIGHLY EFFICIENT MANAGEMENT OF MULTIPLE SANs

By increasing the efficiency of the administrators who manage multiple Brocade SANs, Fabric Manager helps reduce provisioning, monitoring, and management time and costs. With the unique ability to provide real-time information and streamline SAN management tasks, Fabric Manager provides the following key capabilities:

- Manages multiple Brocade switch elements across multiple fabrics. It discovers and collects SAN data, and provides multiple views of that data—including topology maps (see Figure 1) and detailed views.
- Displays the status of critical fabric elements and key discovery data at varying levels of detail, such as high-level “At-a-Glance” views (see Figure 2), and detailed tables that display information about switches, ports, devices, and events.

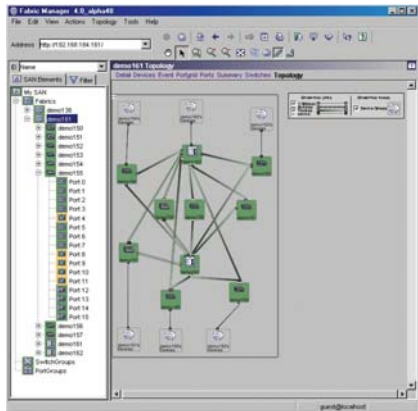


Figure 1. The fabric explorer tree and topology map show true SAN fabric structure, including core-to-edge layouts.

- Stores performance and asset information, and exports critical data in formatted reports.
- Provides data and management console views designed for effective management of FICON® environments.

ADVANCED FEATURES FOR EVEN GREATER MANAGEMENT CAPABILITIES

Fabric Manager provides several unique methods for managing SANs, including:

- **Change management:** Provides a user-configurable fabric snapshot/compare feature that tracks changes to fabric objects and membership.
- **Brocade Secure Fabric OS® management:** Allows full control of Secure Fabric OS policy display and configuration, enabling administrators to securely control switch and device connectivity, management access, and other key functions.
- **Full integration with RADIUS:** Features a wizard to replicate a RADIUS authentication server configuration from one switch to many switches.
- **Wizards:** Streamline workflow for tasks such as zoning and the setup of secure and routed fabrics.
- **Call Home support:** Facilitates remote support, fault isolation, and diagnosis to lower the cost of supporting Brocade SANs.

- **Historical performance monitoring:** Collects, dates, and displays port and end-to-end monitoring data to facilitate problem determination and capacity planning.
- **Embedded SQL database:** Enables administrators to extract information for customized views of their operational environments, with full integration for popular tools such as Microsoft Office and Crystal Reports.
- **Amplified reporting:** Includes GUI-based functions for exporting configuration, performance monitoring, and physical asset data in a spreadsheet format for easy analysis.
- **HBA management:** Discovers and tracks HBA asset data, and upgrades firmware from a central location without host-based agents.

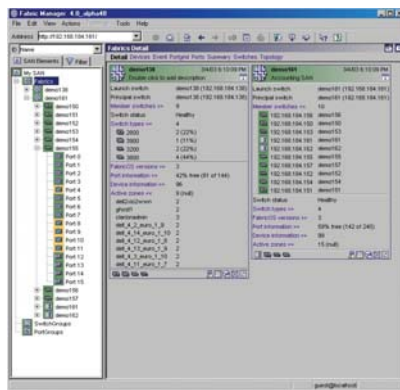


Figure 2. The “At-a-Glance” feature shows SAN and group information at multiple levels of detail.

- **Profiling, backup, and cloning:** Enables administrators to capture a switch configuration profile, back up the snapshot, and compare the backup to current switch configurations. Cloning facilitates the distribution of profiles to switches within the fabric.
- **Scalable firmware download and repository:** Supports the Brocade Fabric OS® firmware upgrade process across logical groups, password controls, multiple fabrics, and SAN infrastructures with multiple security levels. Fabric Manager provides fabric profiles for firmware selection, recommendations for appropriate firmware for each switch type, and reporting facilities for a SAN-wide inventory of firmware installed on fabric switches.
- **FICON/CUP:** Configures and manages FICON environments concurrently in Fibre Channel environments.
- **Launching of third-party management applications:** Provides a configurable menu item to launch any management application from any switch in a fabric.
- **Device troubleshooting analysis:** Utilizes a diagnostics wizard to identify why devices are not communicating properly, reducing fault-determination time.

MAXIMIZING SAN INVESTMENTS

For more information, contact an authorized Brocade sales partner or visit www.brocade.com.

SYSTEM REQUIREMENTS

Operating system Windows 2000, XP, 2003; Sun Solaris 8, 9
Hard drive storage 50 MB free disk space

Operating System	Installation Type	1 to 512 Ports (1 to 20 Switches)	513 to 1280 Ports (21 to 50 Switches)	1281 to 2560 Ports (51 or More Switches)
Windows	Client	800 MHz CPU 256 MB RAM	1.5 GHz CPU 512 MB RAM	1.5 GHz CPU 512 MB RAM
	Server	1.8 GHz P4 CPU 1 GB RAM	2.0 GHz P4 CPU 1.5 GB RAM	2 x 3 GHz P4 CPU 2.5 GB RAM
Solaris	Client	Ultra 5 300 MHz CPU 512 MB RAM	Ultra 10 400 MHz CPU 768 MB RAM	Ultra 30 400 MHz CPU 1 GB RAM
	Server	Ultra 10 400 MHz CPU 1 GB RAM	Ultra 60 2x450 MHz CPU 1.5 GB RAM	Ultra 60 2x450 MHz CPU 2.5 GB RAM



Corporate Headquarters
 San Jose, CA USA
 T: (408) 333-8000
info@brocade.com

European and Latin American Headquarters
 Geneva, Switzerland
 T: +41 22 799 56 40
emea-info@brocade.com

Asia Pacific Headquarters
 Singapore
 T: +65-6538-4700
apac-info@brocade.com

© 2005 Brocade Communications Systems, Inc. All Rights Reserved. 08/05 GA-DS-174-07

Brocade, the Brocade B weave logo, Fabric OS, Secure Fabric OS, and SilkWorm are registered trademarks and Tapestry is a trademark of Brocade Communications Systems, Inc., in the United States and/or in other countries. FICON is a registered trademark of IBM Corporation in the U.S. and other countries. All other brands, products, or service names are or may be trademarks or service marks of, and are used to identify, products or services of their respective owners.

Notice: This document is for informational purposes only and does not set forth any warranty, expressed or implied, concerning any equipment, equipment feature, or service offered or to be offered by Brocade. Brocade reserves the right to make changes to this document at any time, without notice, and assumes no responsibility for its use. This informational document describes features that may not be currently available. Contact a Brocade sales office for information on feature and product availability. Export of technical data contained in this document may require an export license from the United States government.